

# SPCS SUMMER READING

1st  
Grade

1. *Winnie the Pooh* by A.A. Milne
2. *Before I Was Me* by Frank Fraser
3. *Ugly Duckling* by Hans Christian Andersen
4. *A Pair of Red Clogs* by Masako Matsuno
5. Bible Stories (Children's Bible Edition)- Self-select three stories
6. Mother Goose Nursery Rhymes- Self-select five rhymes

Please read all selections carefully and with understanding (See the guidelines for reading comprehension on the reverse side).

You can:

- Read it to yourself
- Take turns reading with an adult or a sibling
- Listen to an adult reading it to you

Create one simple project for selection number four- *A Pair of Red Clogs*. Choose a project from the choice board below, or you may come up with your own creative idea.

## Book Report Choice Board

Small sock puppet(s)  
representing characters from  
the story

Diorama representing a scene  
from the story. You may use a  
shoebox, small tri-fold poster  
board, etc.

Create a Japanese lantern.  
There are many patterns  
available online

Decorate a kimono. Outline of  
kimono included. You can  
color, paint, use pieces of  
fabric, ribbons, etc.

# The Guidelines for the Reading Comprehension

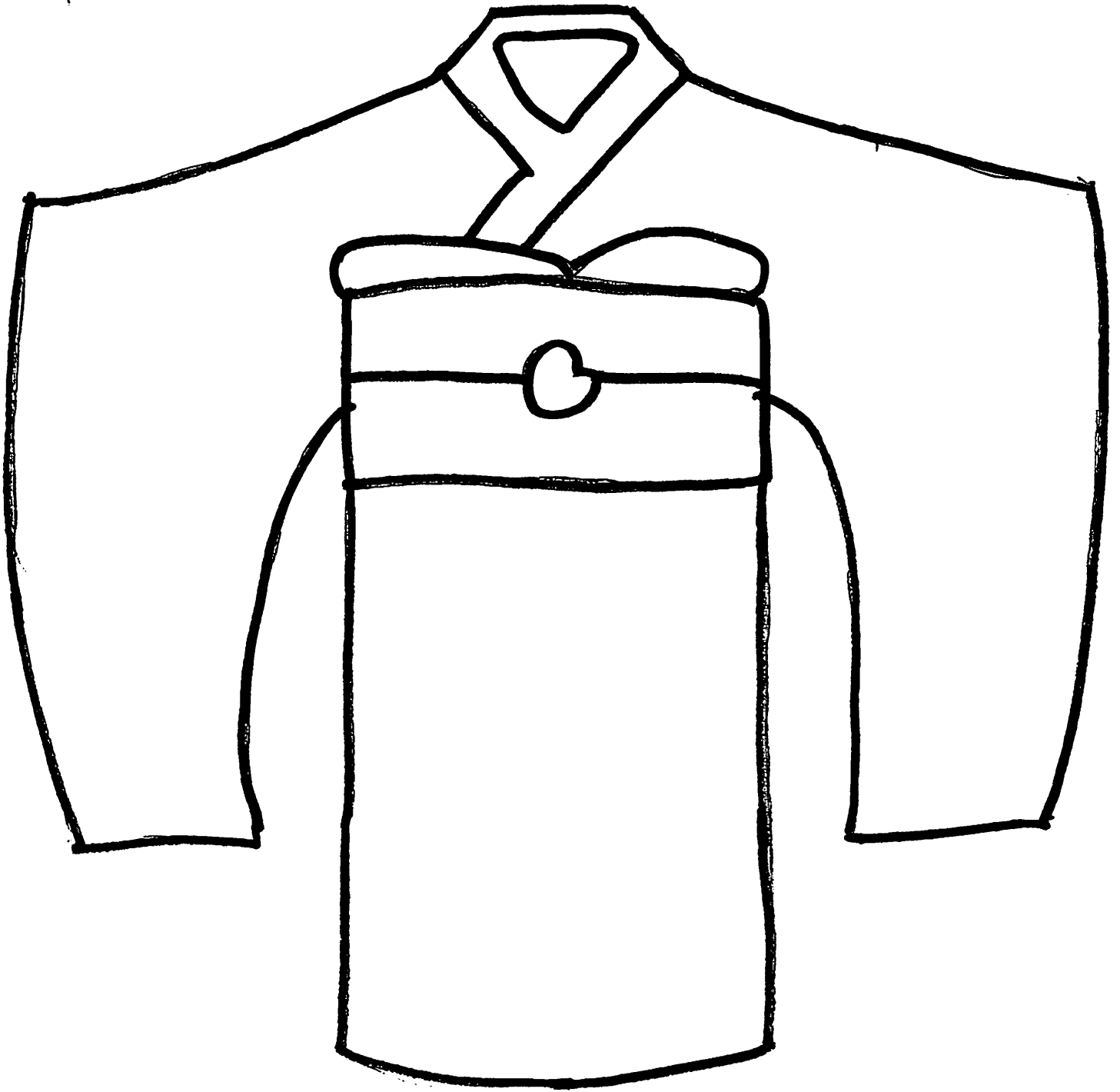
Here are some questions you may ask your child as you read a story:

- ☐ What is *happening* on this *page*?
- ☐ What happened at the beginning (middle or end) of the story? (retell)
- ☐ Is there a confusing *part*? What don't you understand? (clarify)
- ☐ What *is* the most important idea or event?  
(determine what is important)
- ☐ Can you summarize what you read in one sentence? (summarize)
- ☐ Can you ask a question about what you read? (question, clarify)
- ☐ What do you think might happen next? Why do *you think* that?  
(predict)
- ☐ What are you *thinking* now? (think aloud)
- ☐ What are you thinking about the character? What might the character be thinking or *feeling right* now?  
(inference, character analysis)
- ☐ Why do you think the character did (or *said*) that? (inference, cause-effect)
- ☐ How do you think the character feels now? (inference) What was the effect of...? What do you think caused that to happen? (cause-effect)
- ☐ Does the character represent any virtues our school encourages?

Hope you will have lots of fun exploring all selections. Please do not wait until the last minute. Start reading as soon as possible.  
I can't wait to see you in my class in August. Have a wonderful summer vacation.

God Bless You,

Mrs. Nogay





paint the world  
**SUPER**  
COLORING